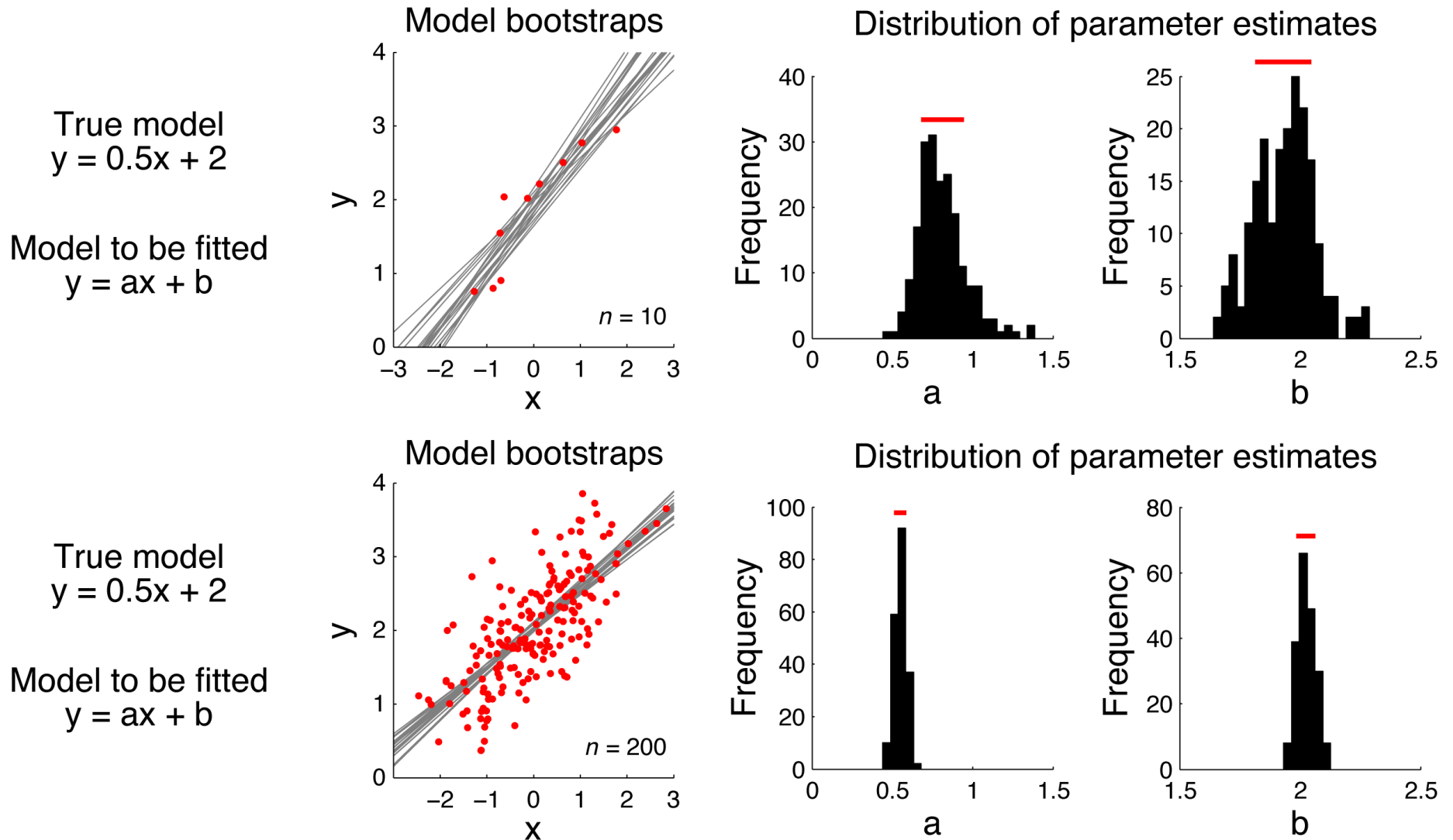


# **Statistics and Data Analysis in MATLAB**

## **Lecture 6: Model reliability**

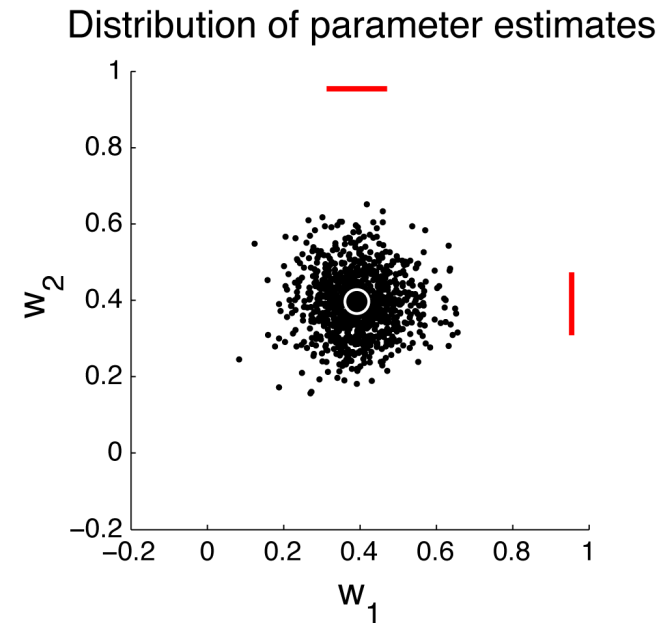
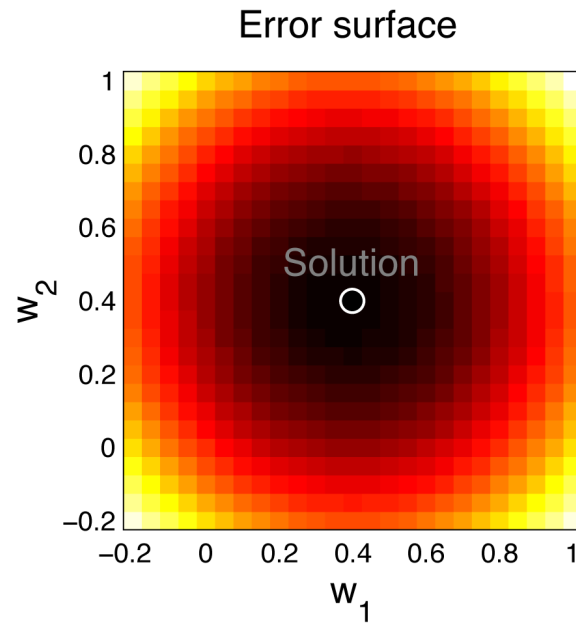
Kendrick Kay  
Washington University in St. Louis  
March 28, 2014

# Error bars on model parameters via bootstrapping

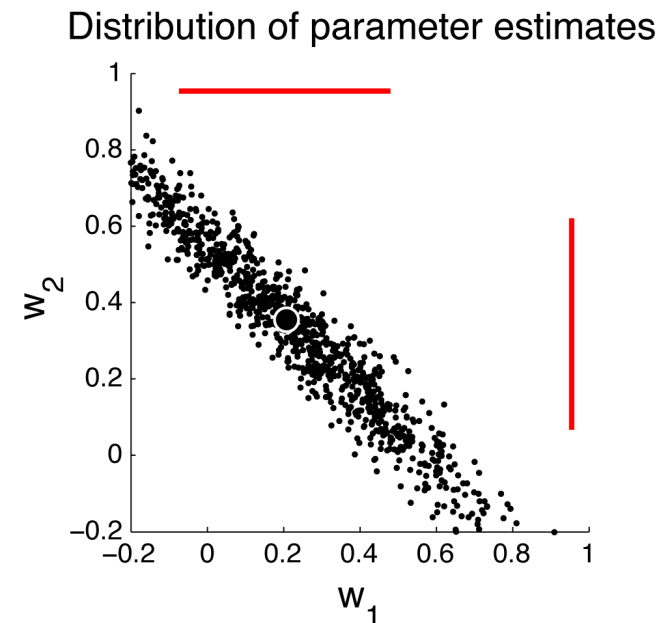
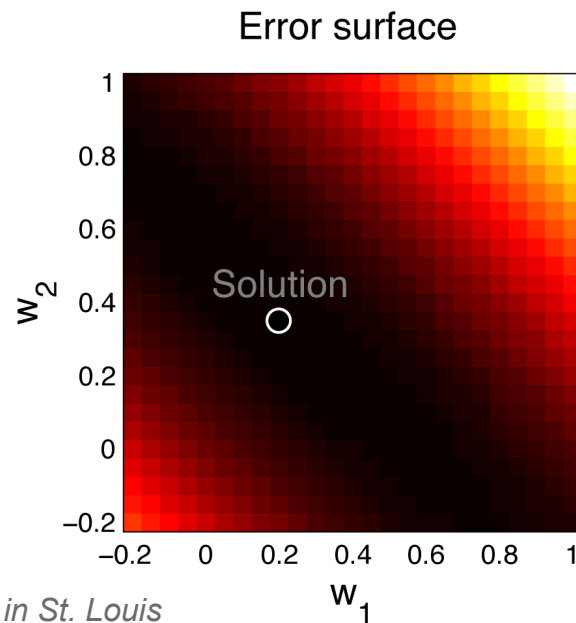


# Correlated regressors yield correlated errors

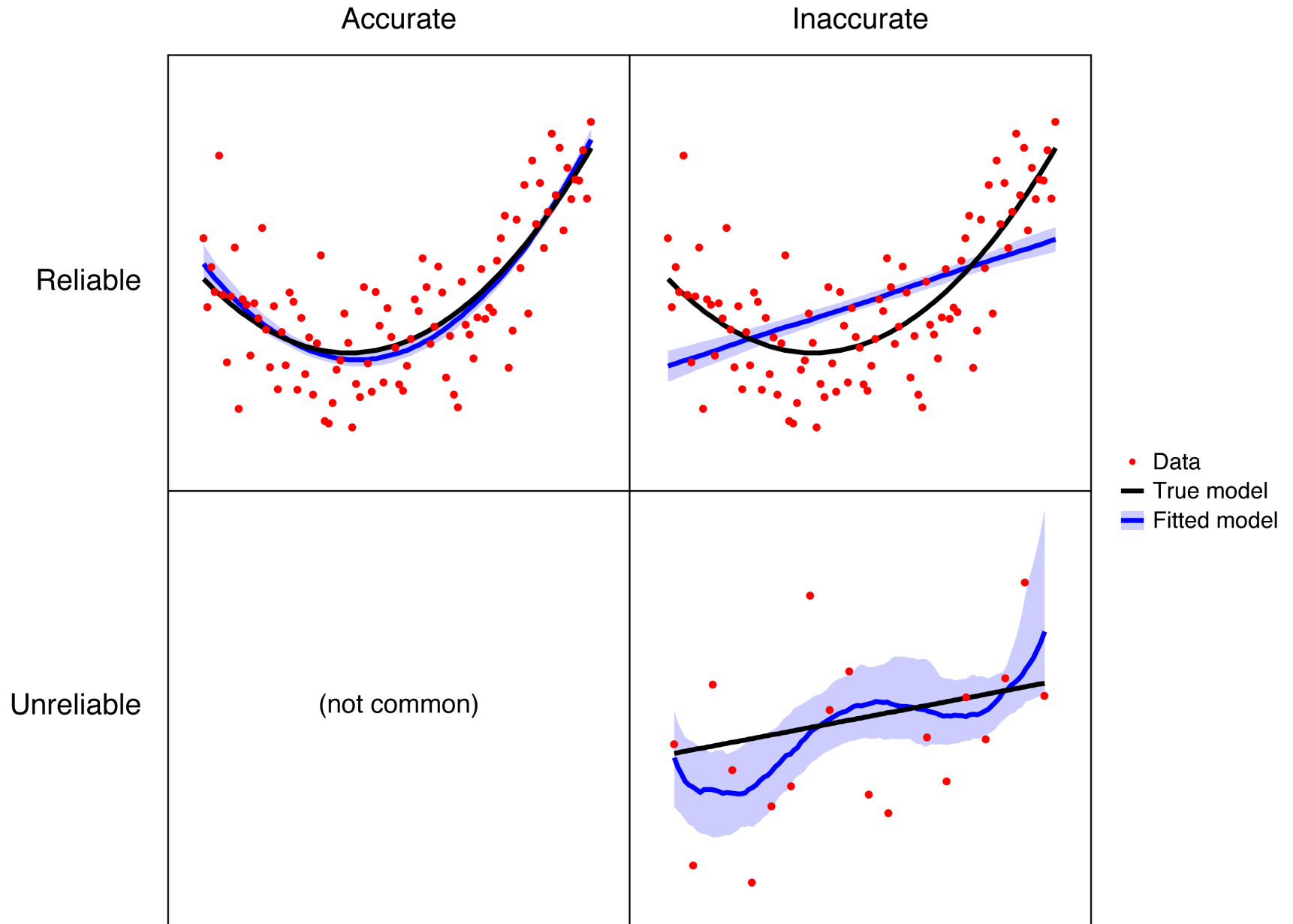
Model  
 $y = w_1x_1 + w_2x_2$   
  
 $x_1$  and  $x_2$   
uncorrelated



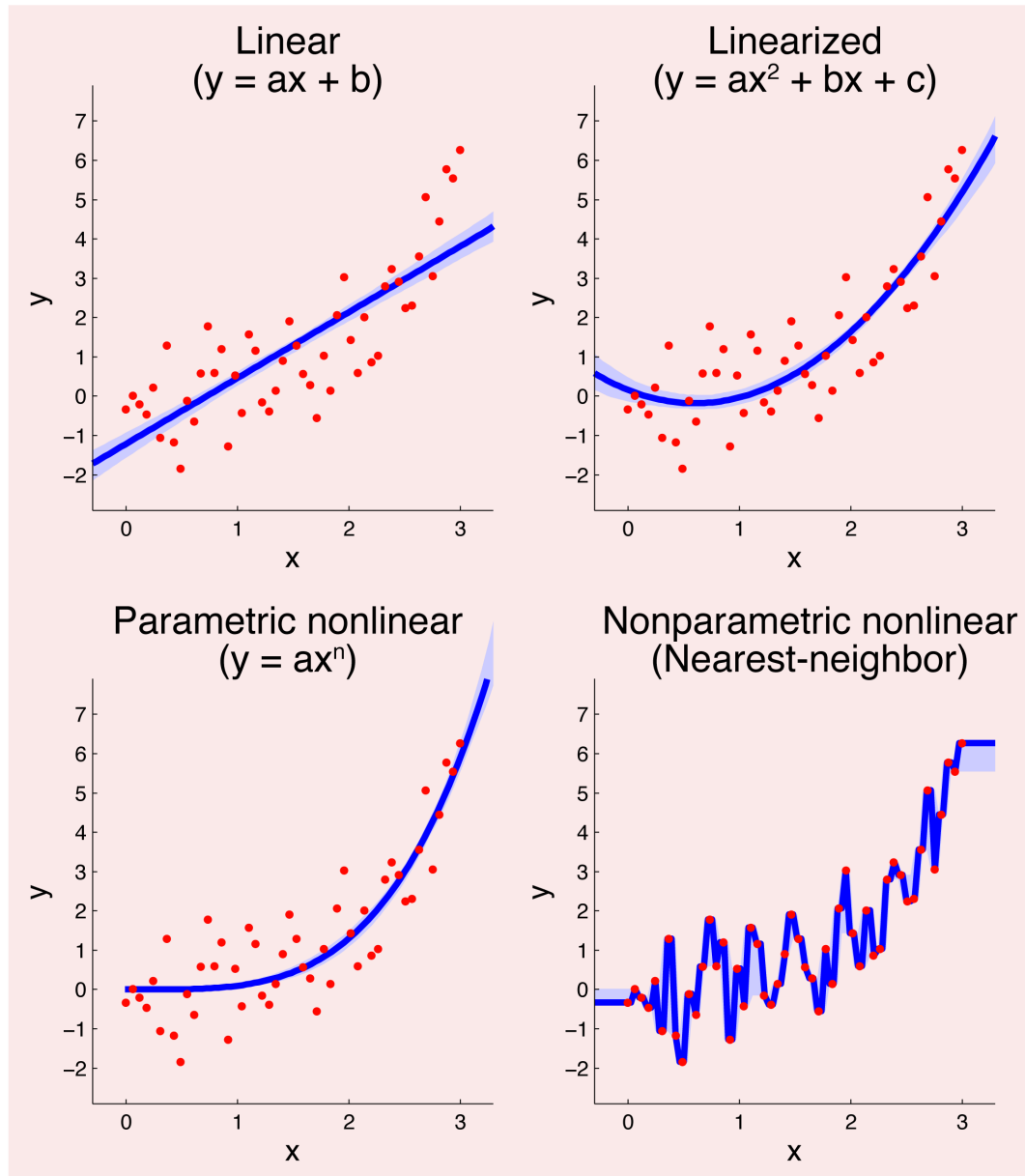
Model  
 $y = w_1x_1 + w_2x_2$   
  
 $x_1$  and  $x_2$   
correlated



# Distinction between accuracy and reliability



# Bootstrapping and cross-validation applies to all models



← Use bootstrapping to estimate model reliability

Use cross-validation to estimate model accuracy

